

UNIT NUMBER	FLOOR	TYPE	M <sup>2</sup>	SUH:DSfNA min Area
APT01	Ground Floor	2Bed/4pers	78.4	73.00
APT02 (DUPEX)	1st/2nd Floor	3Bed/5pers	114.1	90.00
APT03	Ground Floor	2Bed/4pers	76.2	73.00
APT04 (DUPEX)	1st/2nd Floor	3Bed/5pers	110.9	90.00
APT05	Ground Floor	2Bed/4pers	76.2	73.00
APT06 (DUPEX)	1st/2nd Floor	3Bed/5pers	110.9	90.00
APT07	Ground Floor	2Bed/4pers	76.2	73.00
APT08 (DUPEX)	1st/2nd Floor	3Bed/5pers	110.9	90.00
APT09	Ground Floor	2Bed/4pers	76.2	73.00
APT10 (DUPEX)	1st/2nd Floor	3Bed/5pers	110.9	90.00
APT11	Ground Floor	2Bed/4pers	76.2	73.00
APT12 (DUPEX)	1st/2nd Floor	3Bed/5pers	110.9	90.00
APT13	Ground Floor	2Bed/4pers	76.2	73.00
APT14 (DUPEX)	1st/2nd Floor	3Bed/5pers	110.9	90.00
APT15	Ground Floor	2Bed/4pers	76.8	73.00
APT16 (DUPEX)	1st/2nd Floor	3Bed/5pers	110.9	90.00

**\* UNITS DESIGNATED TO PART V**

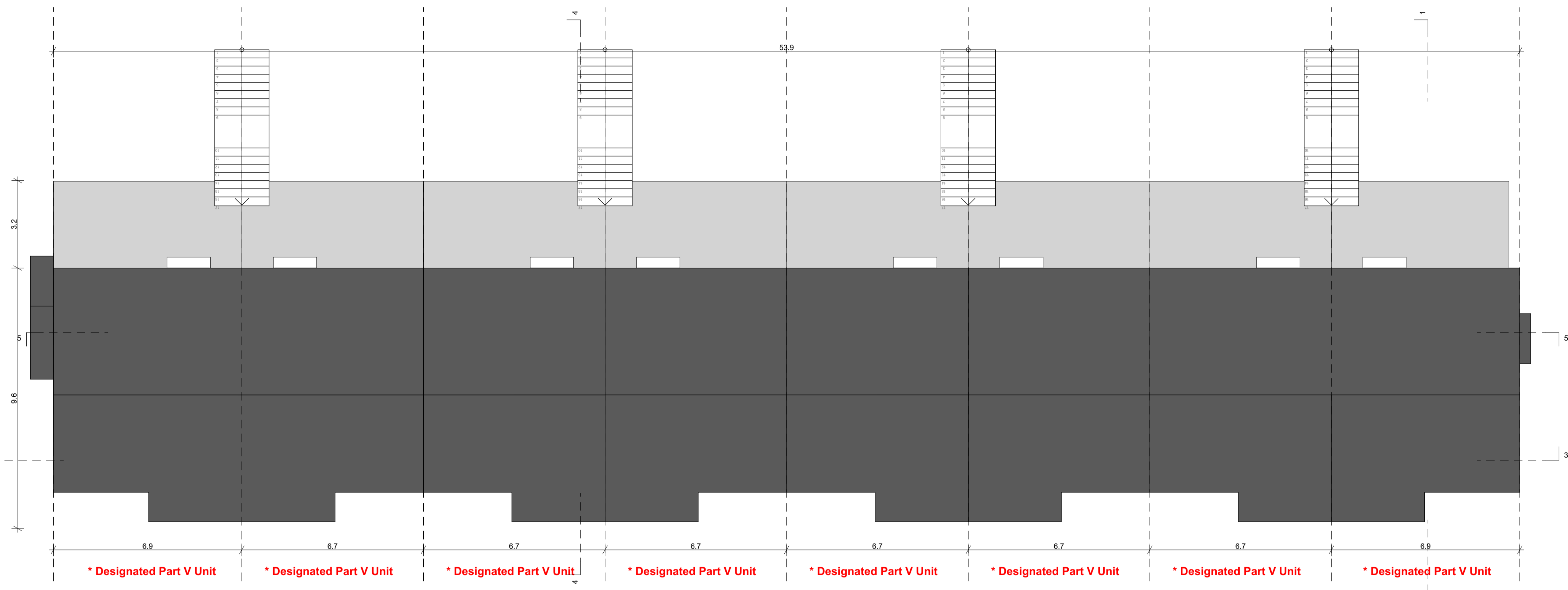
NOTES ON FINISHES:	
ROOF:	TO BE FINISHED IN SLATE OR CONCRETE ROOF TILES IN SELECTED COLOUR OR SIMILAR APPROVED
WALLS:	SELECTED CLAY BRICKWORK OR METAL CLADDING WHERE INDICATED OTHERWISE SELECTED SELF-COLOURED RENDER
JOINERY:	ALL WINDOWS AND DOORS, FRAMES AND LEAFS TO BE ALUMINIUM POWDER COATED TO APPROVED COLOUR OR UPVC OR PAINTED TIMBER TO APPROVED COLOUR. OBSCURE GLAZING WHERE INDICATED TO SENSITIVE WINDOWS.
RAINWATER GOODS:	GUTTERS, DOWNPIPES AND FIXINGS TO BE UPVC OR ALUMINIUM POWDER COATED TO SELECTED COLOUR TO MATCH ROOF SLATES.

**Notes**

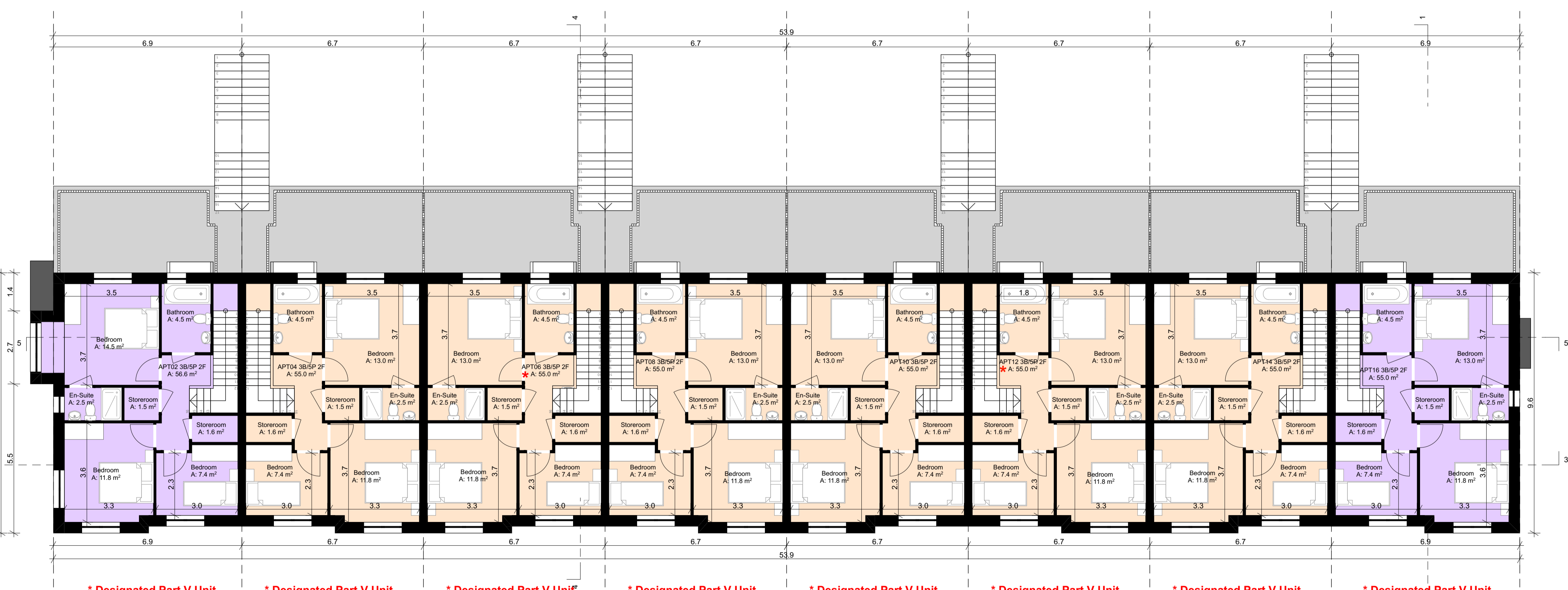
Refer to Architects Site Plan Drawing for North orientation of each units and handing.

Levels on unit type drawings are given relative to 0.00 FFL of the unit type. Refer to Architects Site Plan Drawing for specific FFLs of each unit relative to Malin Head datum level.

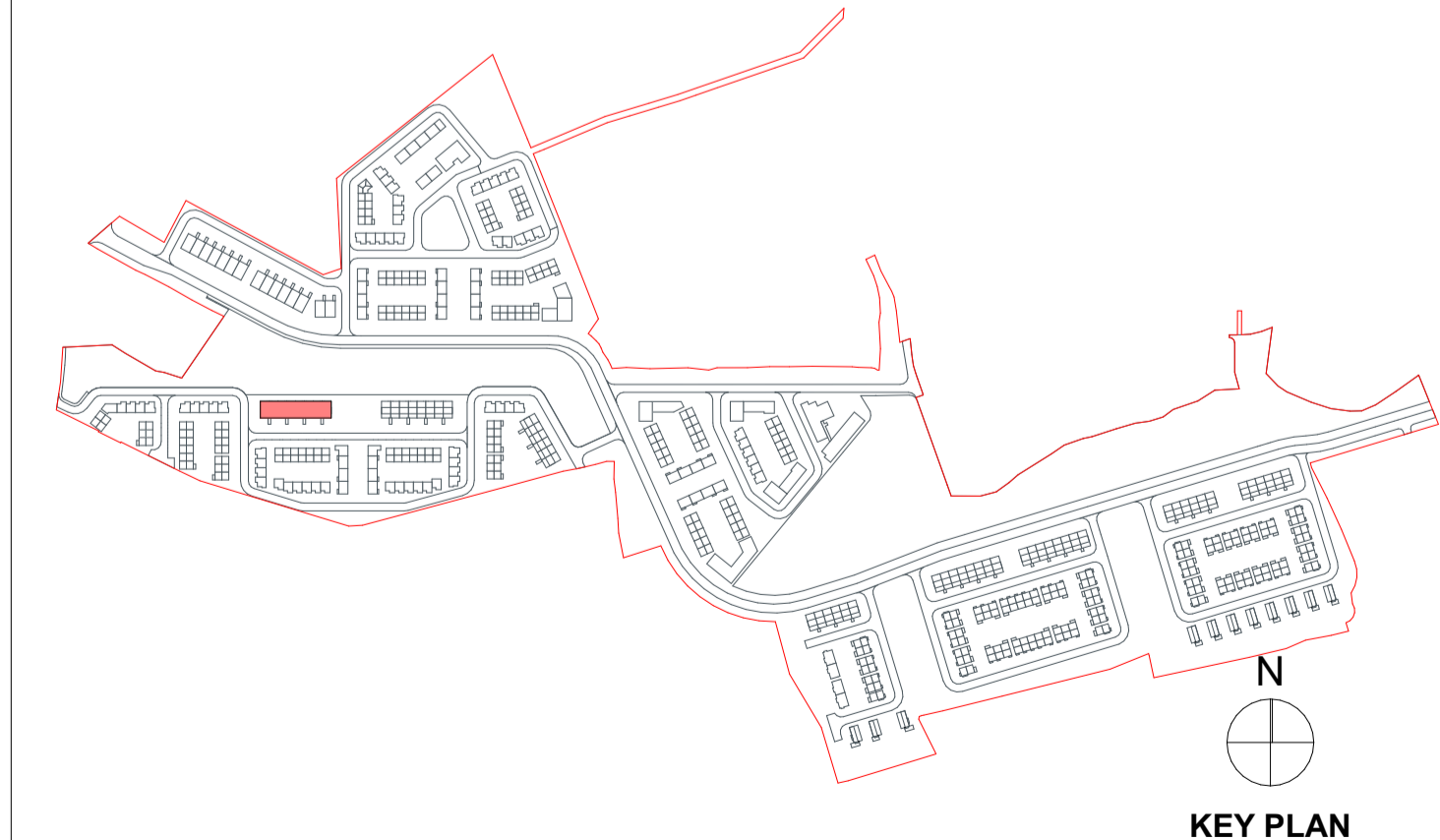
Do not scale from this drawing.  
Use figured dimensions only.  
All errors and omissions to be reported to the Architect.  
This drawing is to be read in conjunction with relevant consultant's drawings.  
This drawing is for planning purposes only and not for construction.  
This drawing or design may not be reproduced without permission.



**ROOF PLAN**  
SCALE 1:100



**SECOND FLOOR PLAN**  
SCALE 1:100



**KEY PLAN**

**RIAI**

**Planning Application**

**DAVEY SMITH ARCHITECTS**

DAVEY SMITH ARCHITECTS   13 SEAPORT BUILDING, 44/45 CLONTARF ROAD, CLONTARF, DUBLIN 3   PH: 01 2447638   EMAIL: info@davey-smith.com   WEB: www.davey-smith.com	
Layout ID:	2205-Oldcourt-Part V PLA-DP D02
Project:	LRD-Development at Oldcourt - Duplex Type D
Drawing Name:	Proposed Second Floor and Roof Plan
Scale:	AS SHOWN (@A1)
Job No.:	2205
Series:	PLANNING
Date:	03/09/2024
Status:	Planning

THIS DRAWING IS TO BE READ IN CONJUNCTION WITH RELEVANT CONSULTANT DRAWINGS. NOTIFY ARCHITECTS OF ANY DISCREPANCIES. CHECK DIMENSIONS ON SITE. USE FIGURE DIMENSIONS ONLY. COPYRIGHT RESERVED FOR DAVEY & SMITH ARCHITECTS LTD.